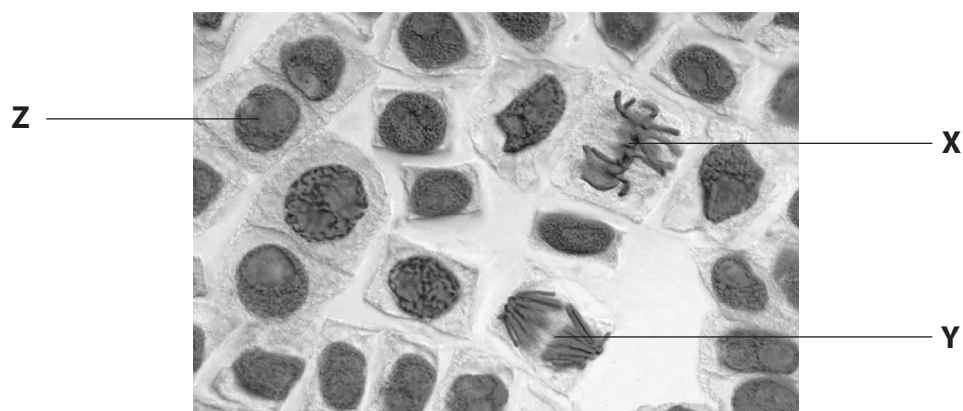


7 The photograph below shows plant cells at different stages in the cell cycle.



Magnification  $\times 600$   
Herve Conge,ISM / Science Photo library

(a) Name the stage of mitosis shown by each of the cells labelled **X** and **Y**.

(2)

**X** .....

**Y** .....

(b) Describe what occurs during prophase.

(4)

.....

.....

.....

.....

.....

.....

.....

.....

.....

.....



(c) Cell **Z** is not undergoing mitosis.

Suggest which stage of the cell cycle it is undergoing.  
Give a reason for your answer.

(2)

.....

.....

.....

.....

.....

.....

**(Total for Question 7 = 8 marks)**

